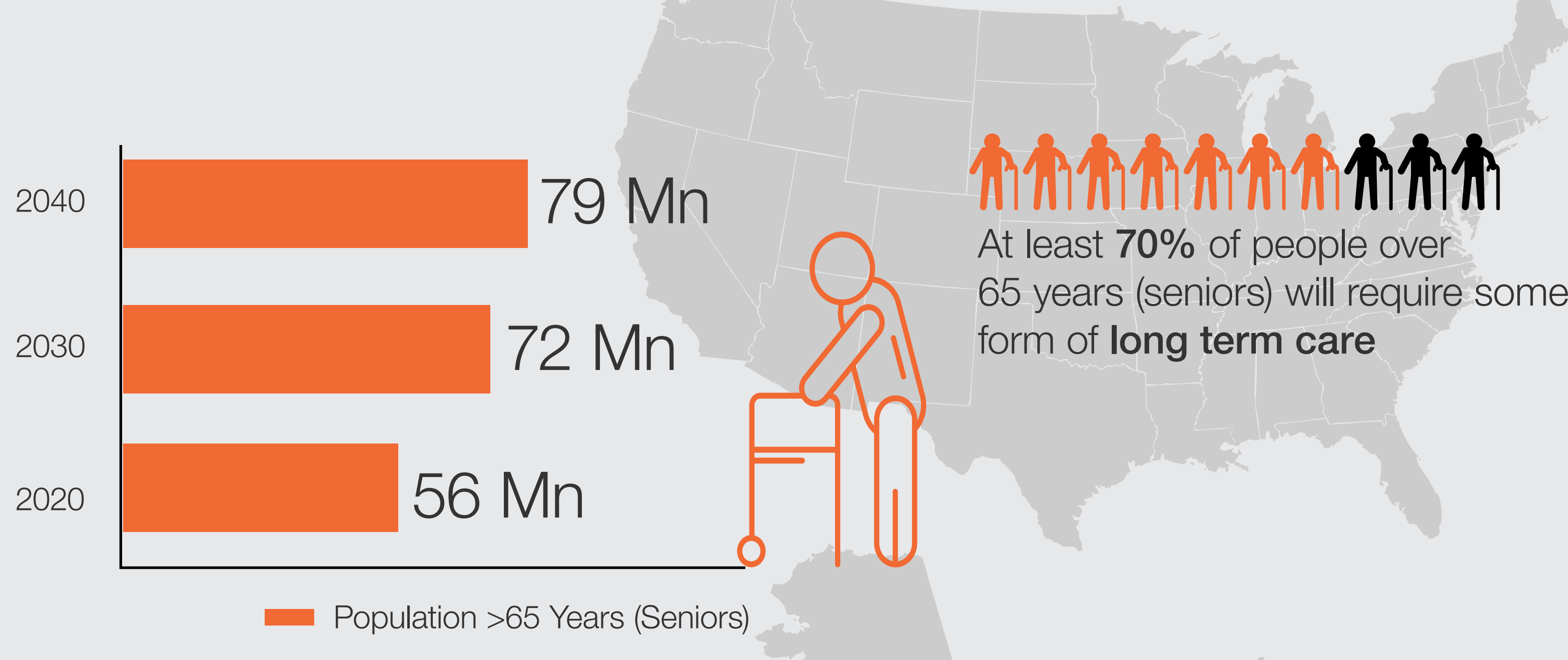


Wi-Fi

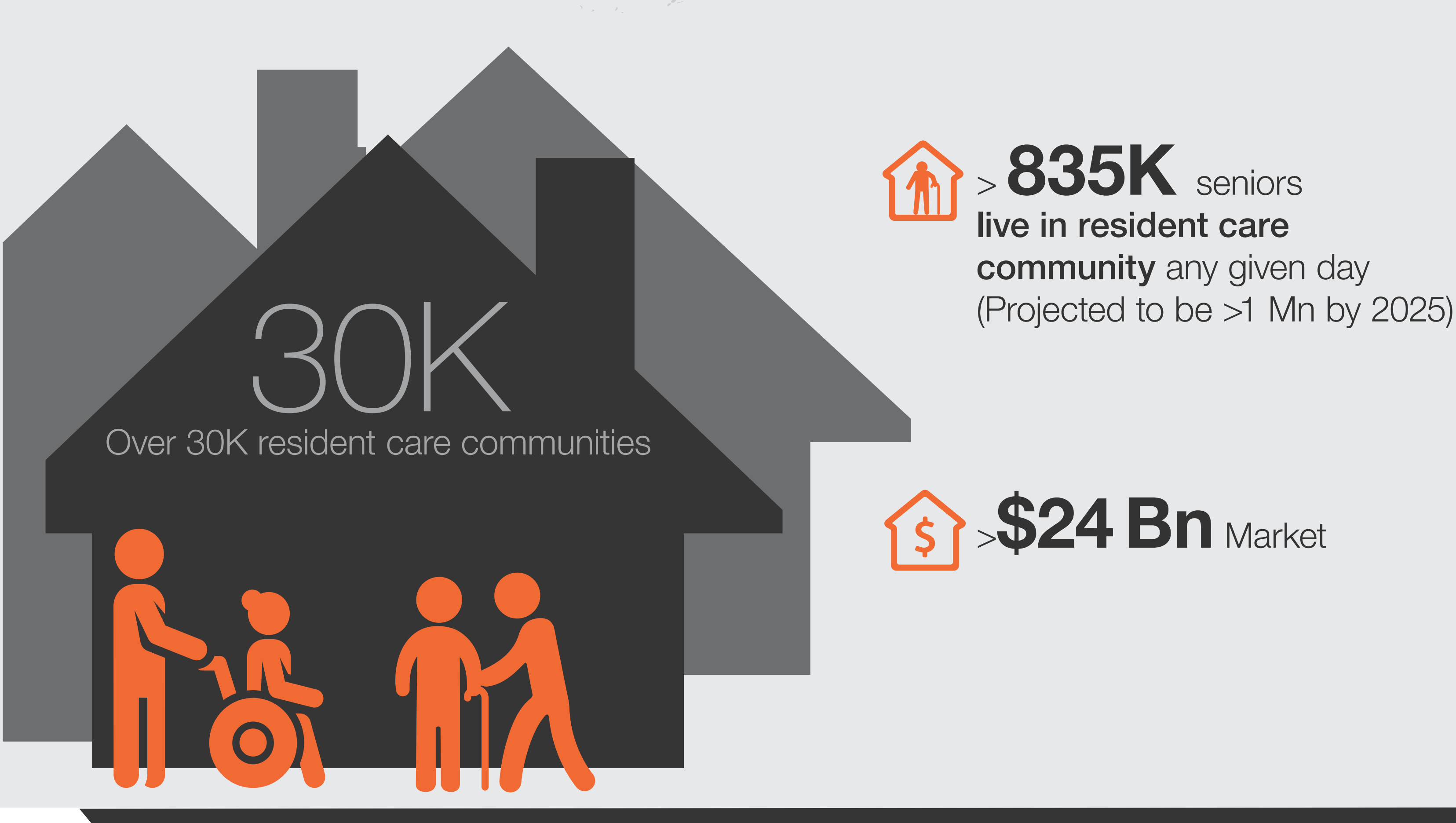
Redefining the Future of Assisted Living



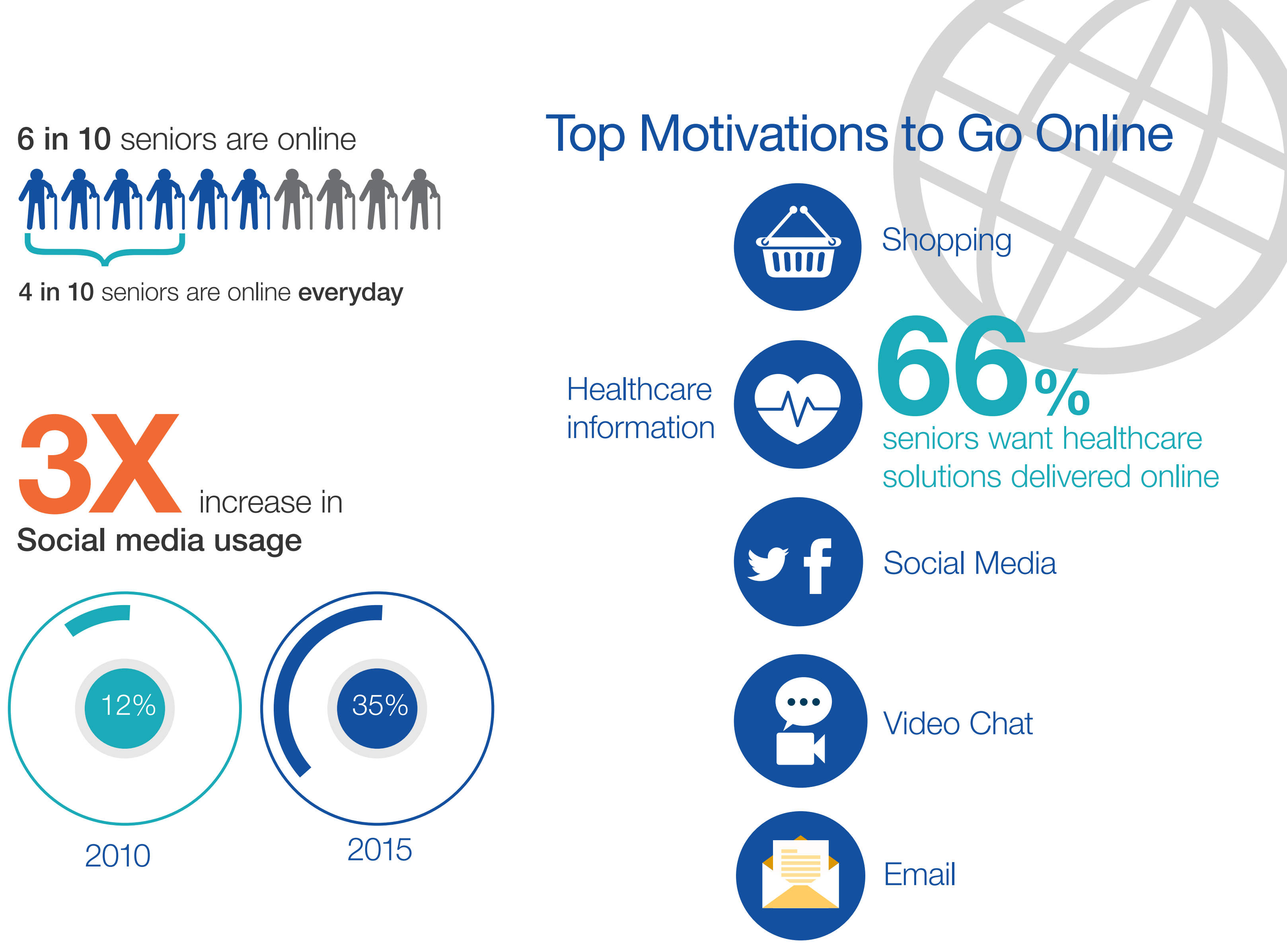
The Nation is Aging With Rising Elderly Population



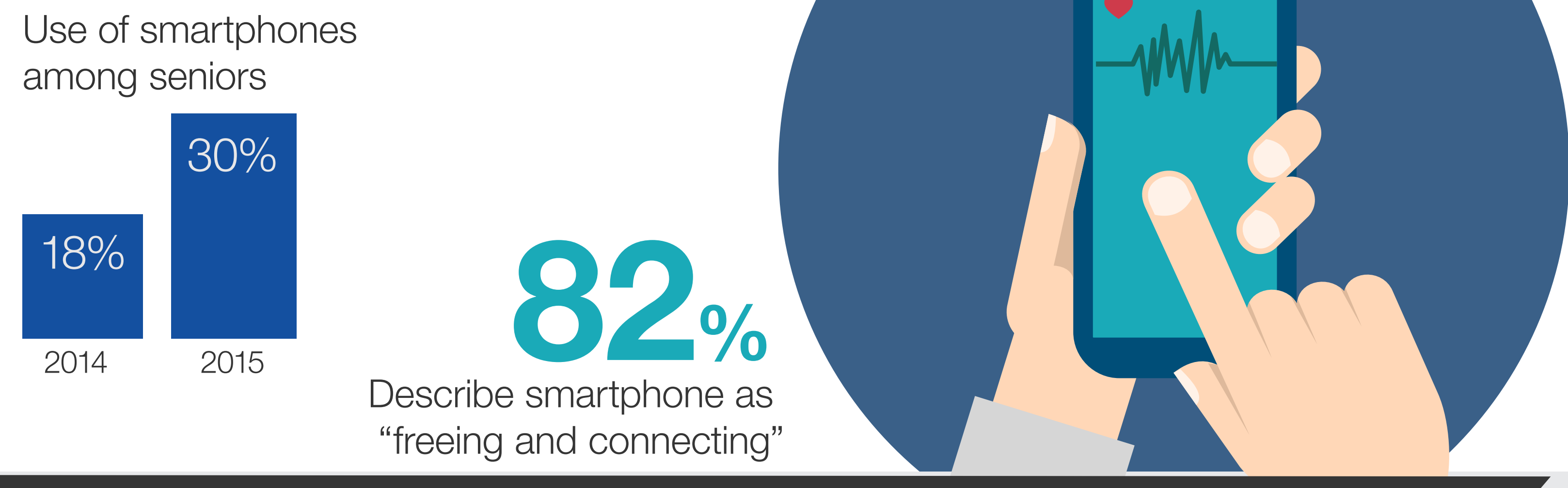
Assisted Living A Driver for Social and Cultural Change in Long Term Care



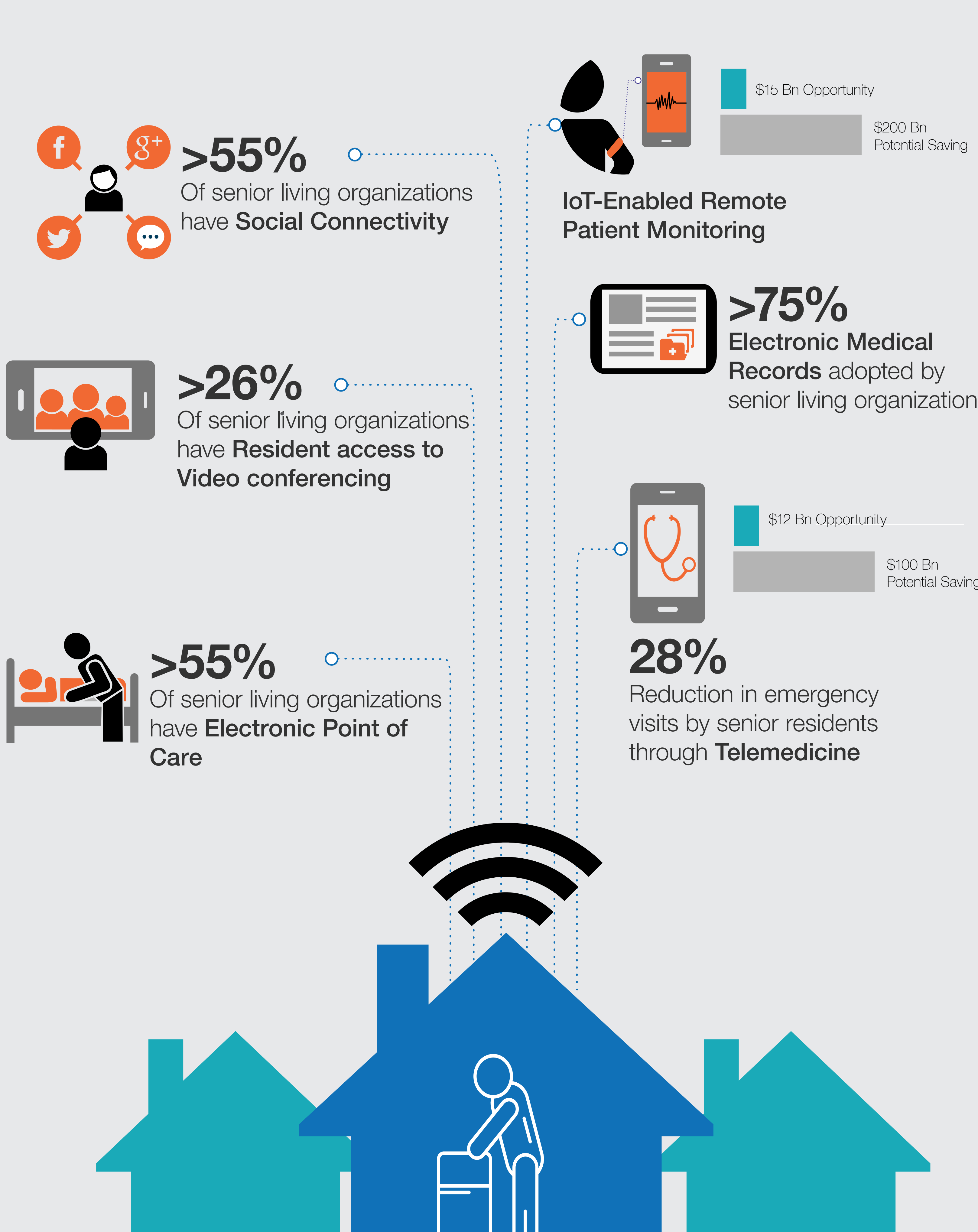
Seniors are Tech-Savvy and Need Wi-Fi to Keep Them Connected



Increased Ownership of Smartphones



Wi-Fi is Enabling Modern Healthcare Technology, Resulting in Smart Aging and Significant Savings



Samsung Wi-Fi Simplifies Life Connections with Life Enhancing and Enriching Experience

- Higher Capacity and Throughput
- Superior Coverage
- Seamless Mobility
- Richer Communications
- Easy to Manage
- IoT Sensors with ZigBee Support
- Built-in Wireless Intrusion Detection & Prevention

Let us help you transform the Wi-Fi network you have today into what you will need to address the challenges of tomorrow.
www.samsung.com/wlan | we.info@samsung.com